

STMicroelectronics

Title:

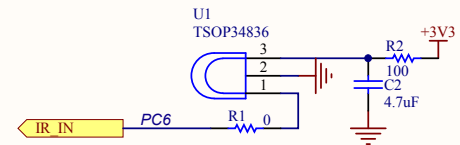
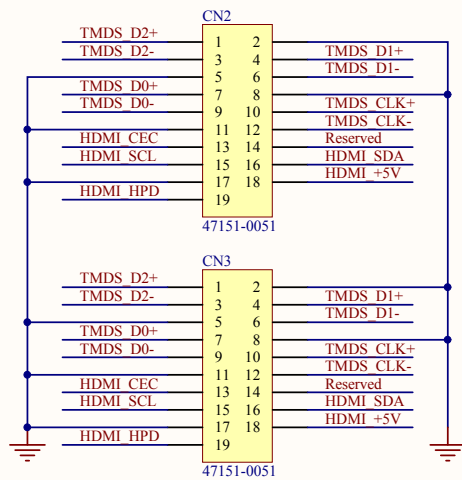
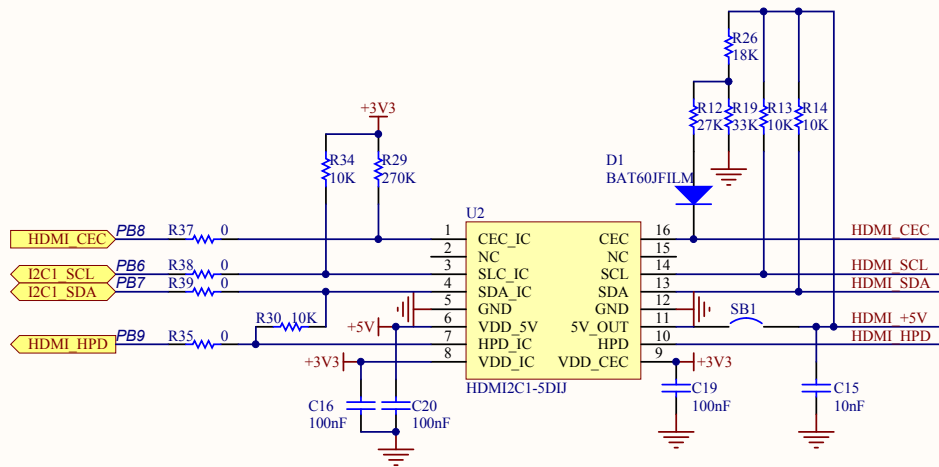
STM32100E-EVAL Audio

Number: MB901

Rev: B.1(PCB.SCH)

Date: 2/4/2011

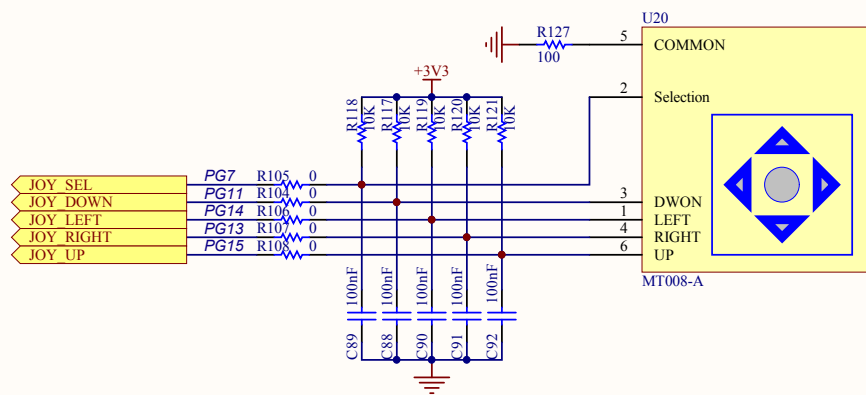
Sheet 5 of 13



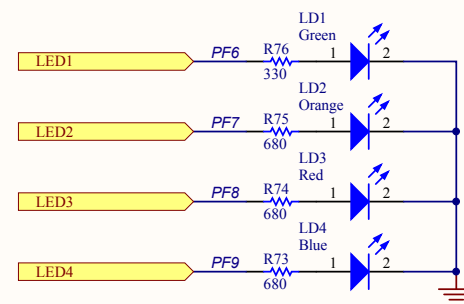
STMicroelectronics

Title: *STM32100E-EVAL HDMI_CEC & IR receiver*

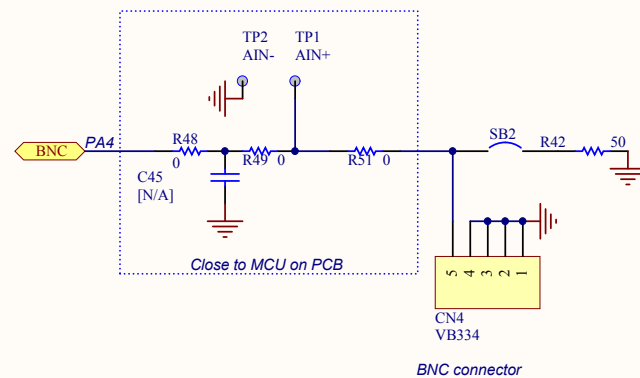
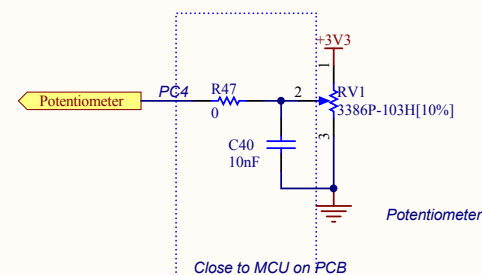
Number: *MB901* | Rev: *B.1(PCB.SCH)* | Date: *2/4/2011* | Sheet *9* of *13*



Joystick



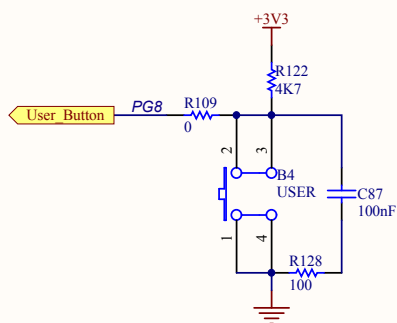
LED



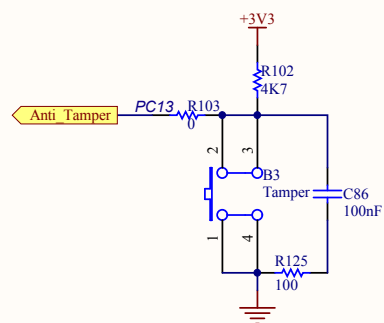
STMicroelectronics

Title: STM32100E-EVAL IO Peripherals

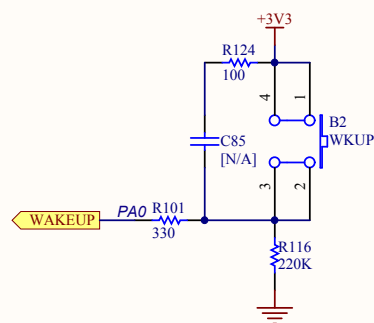
Number: MB901 Rev: B.1(PCB.SCH) Date: 2/4/2011 Sheet 6 of 13



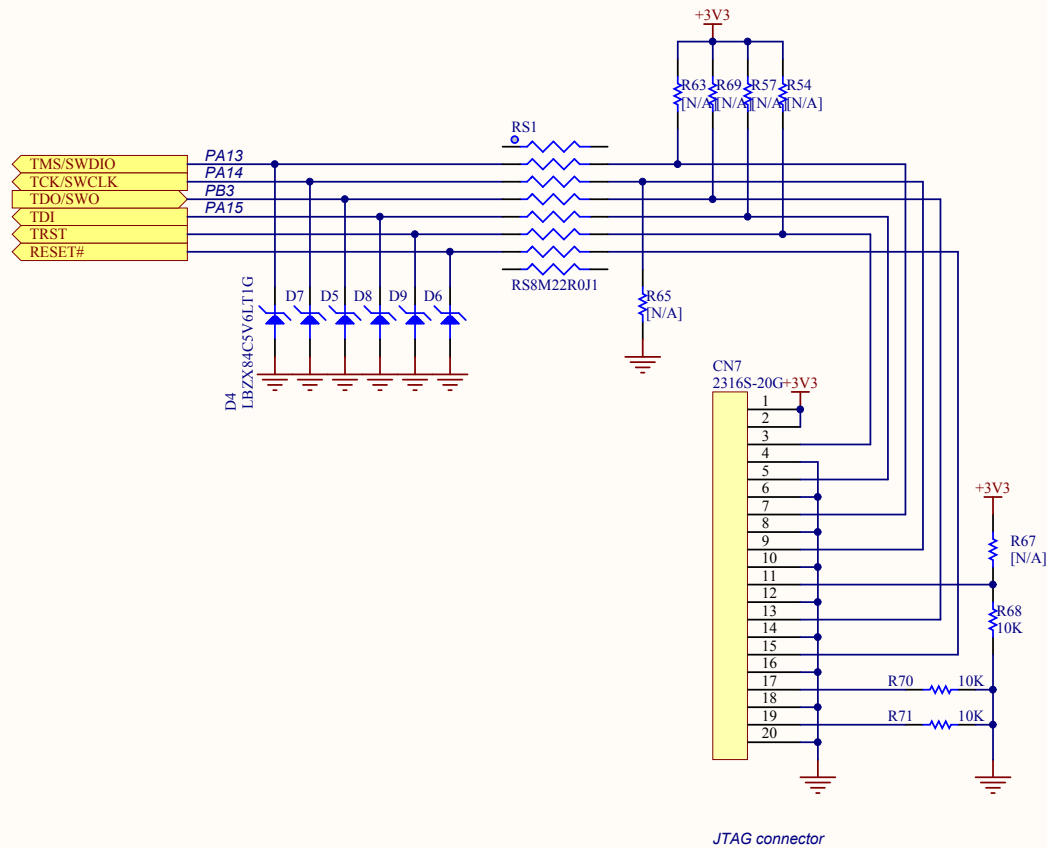
User Button



Tamper Button

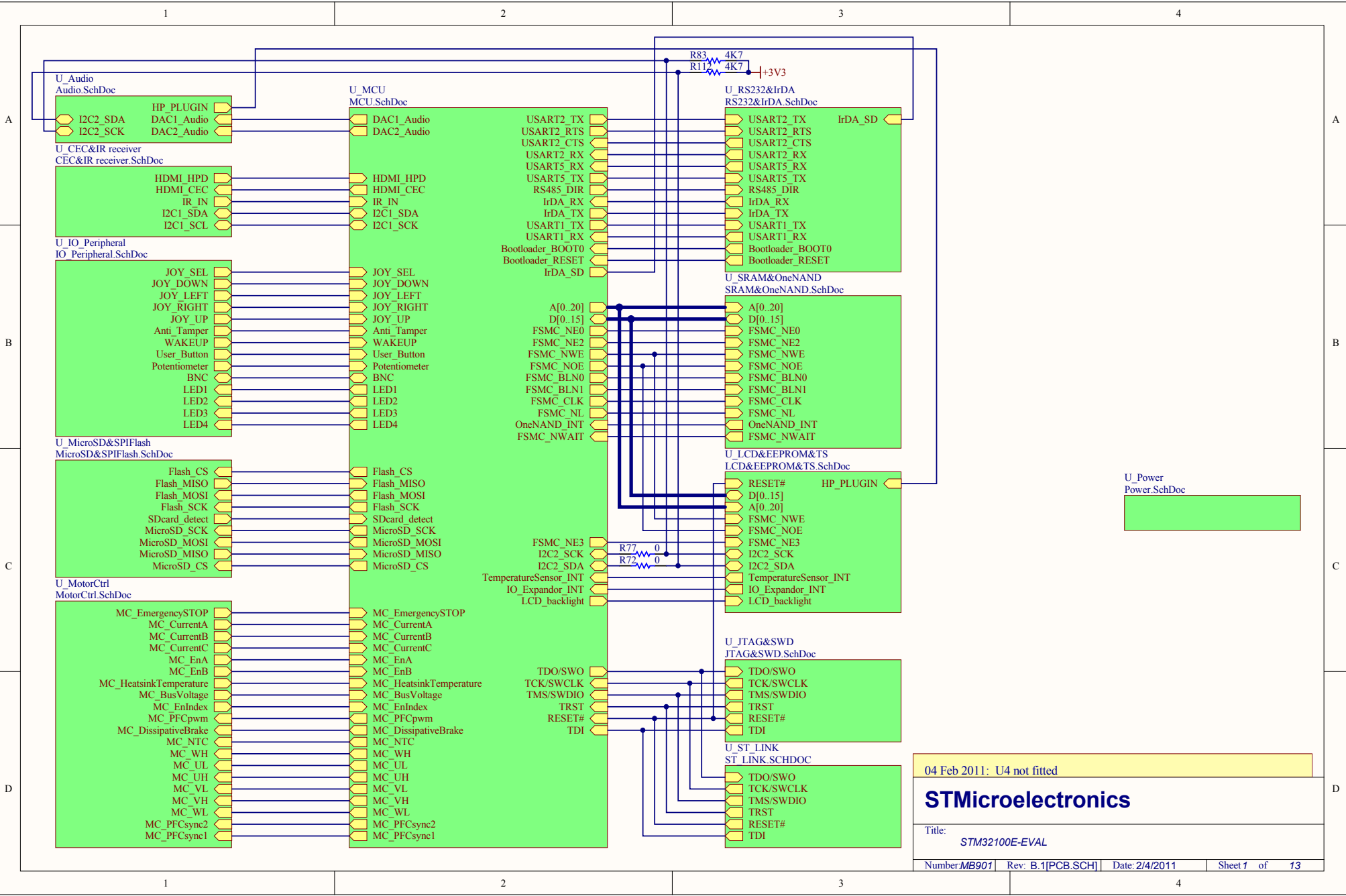


Wakeup Button



STMicroelectronics

Title:			
STM32100E-EVAL JTAG			
Number: MB901	Rev: B.1(PCB.SCH)	Date: 2/4/2011	Sheet 10 of 13

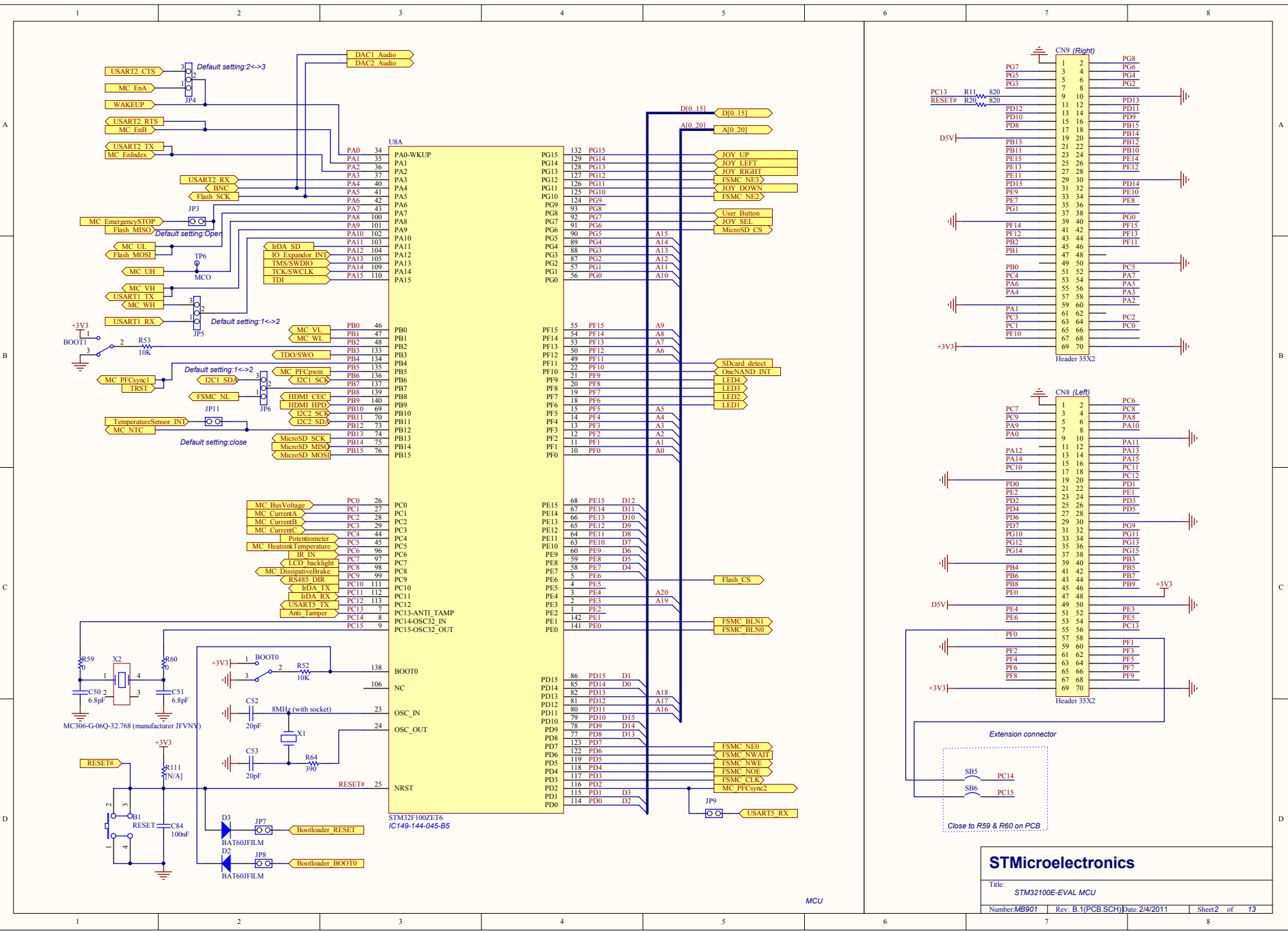


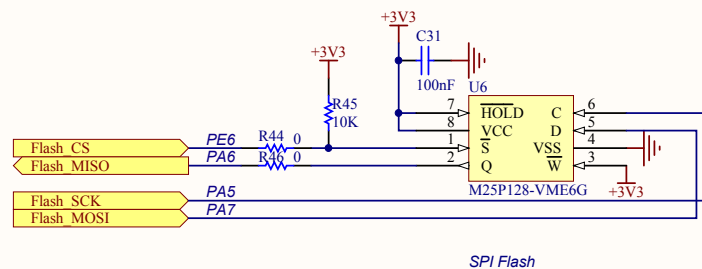
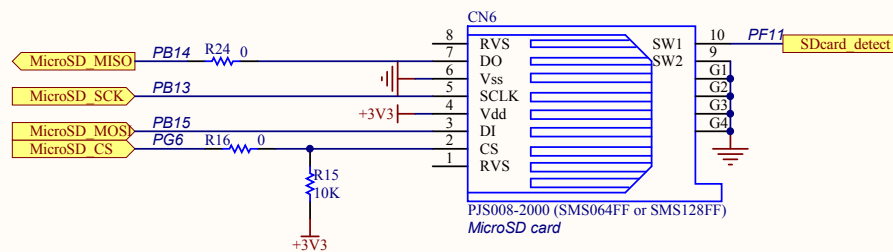
04 Feb 2011: U4 not fitted

STMicroelectronics

Title: STM32100E-EVAL

Number: MB901 | Rev: B.1[PCB.SCH] | Date: 2/4/2011 | Sheet 1 of 13

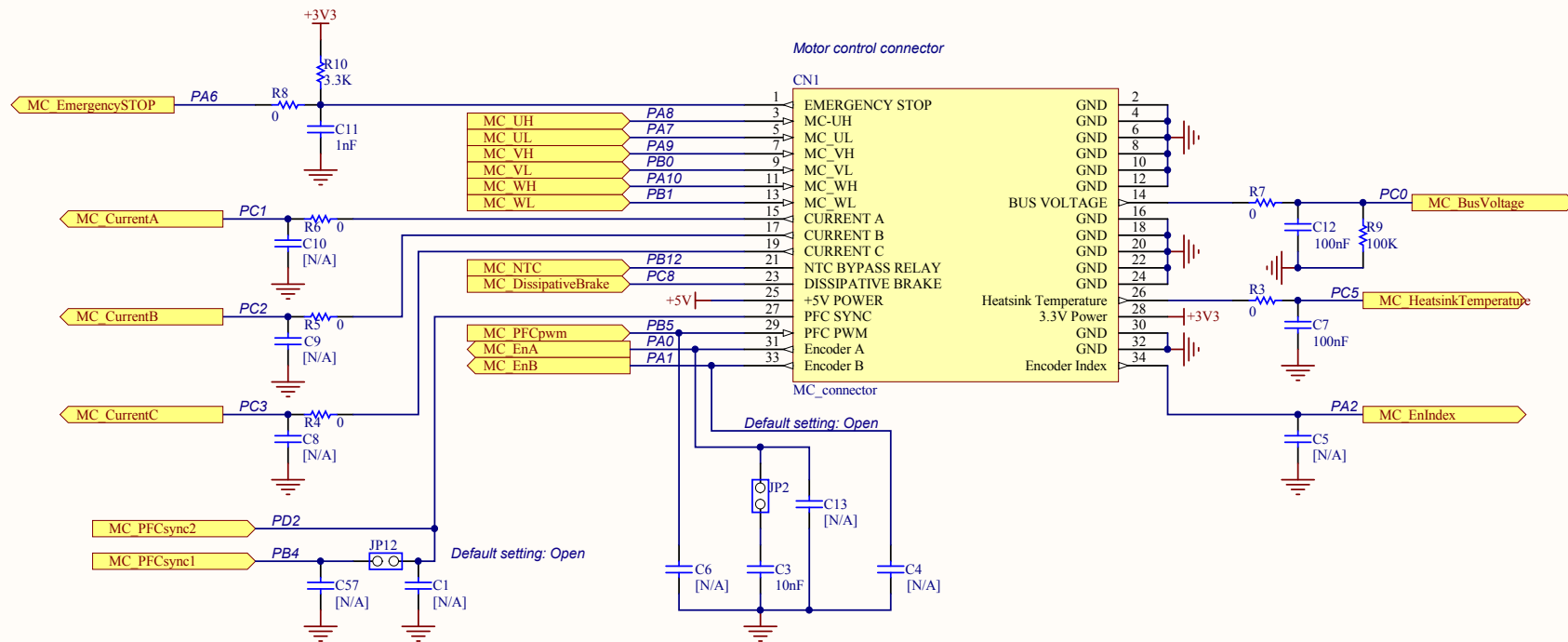




STMicroelectronics

Title: STM32100E-EVAL MicroSD & SPI Flash

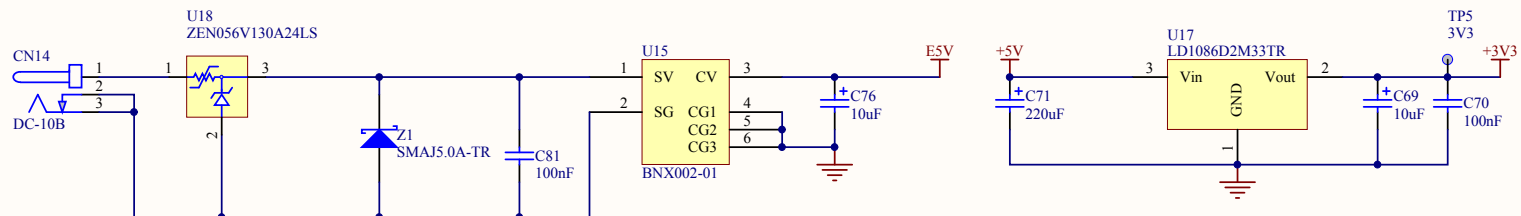
Number: MB901 | Rev: B.1(PCB.SCH) | Date: 2/4/2011 | Sheet 7 of 13



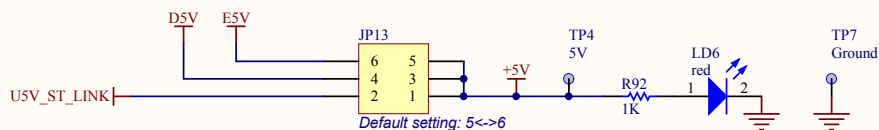
STMicroelectronics

Title: **STM32100E-EVAL Motor Control**

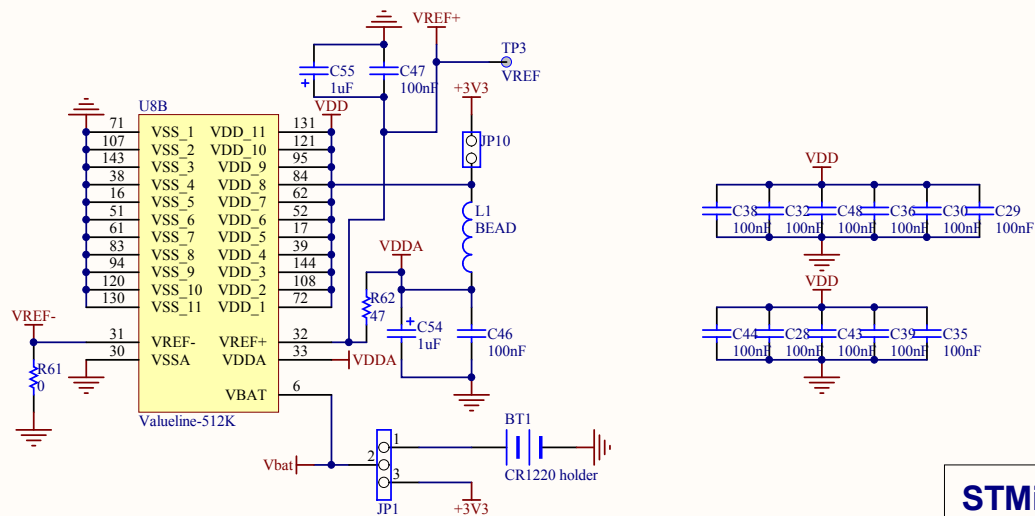
Number: **MB901** | Rev: **B.1(PCB.SCH)** | Date: **2/4/2011** | Sheet **12** of **13**



Power regulator



Jumper for choice between power connector, USB connector or daughter board



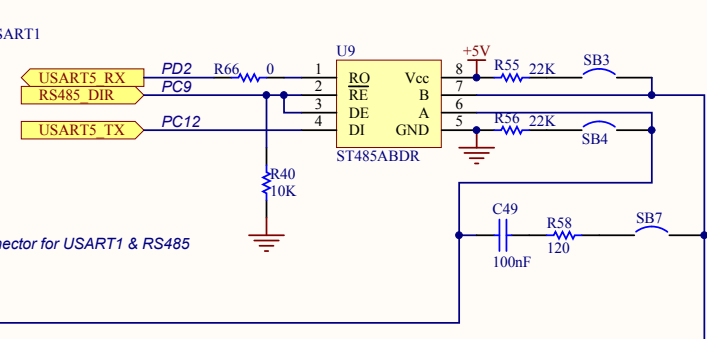
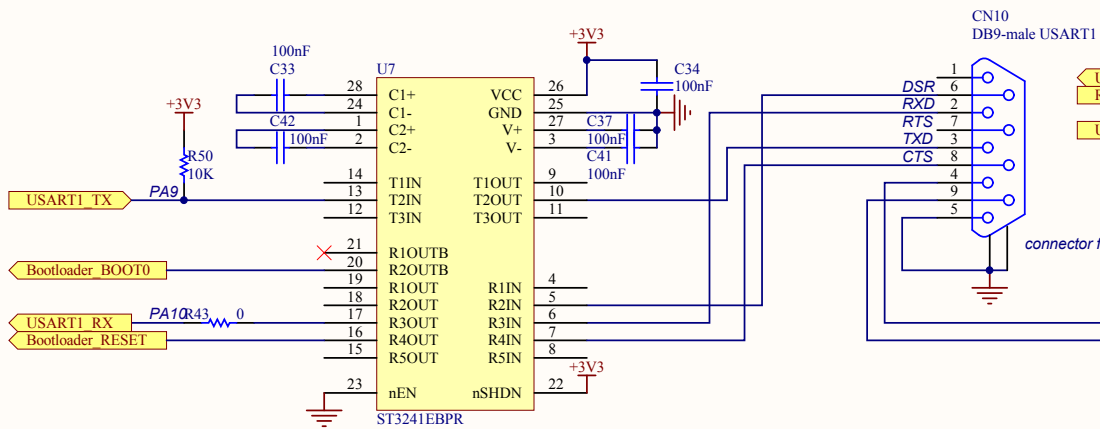
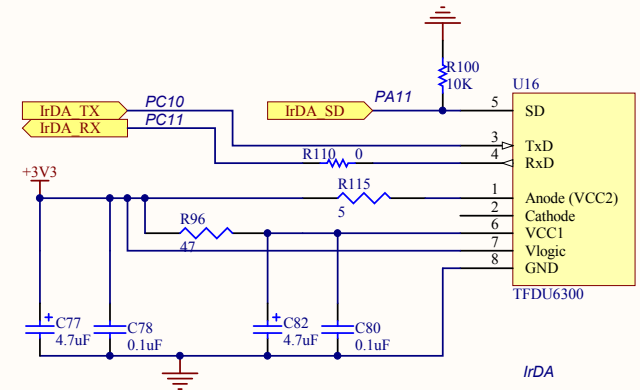
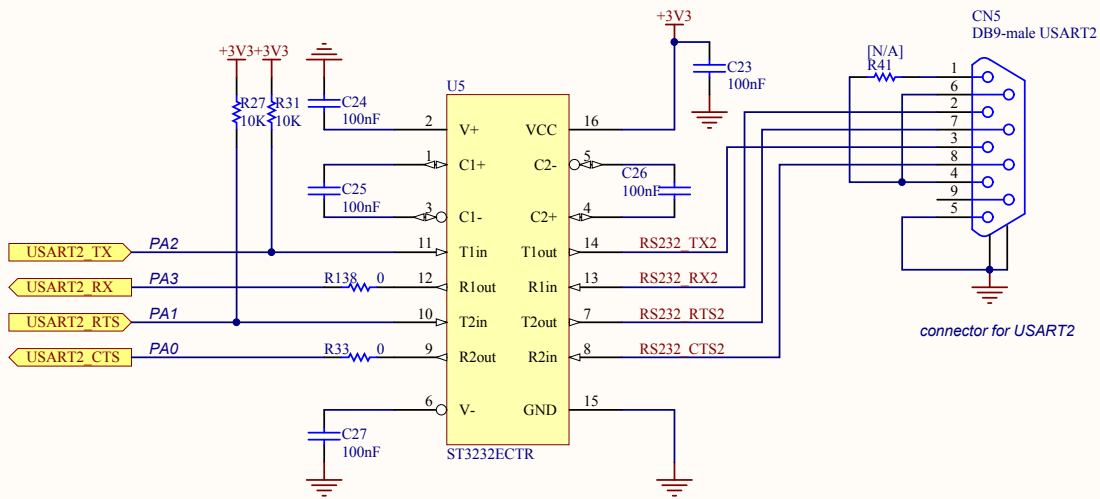
MCU power

Default setting: 2<->3

STMicroelectronics

Title: STM32100E-EVAL Power

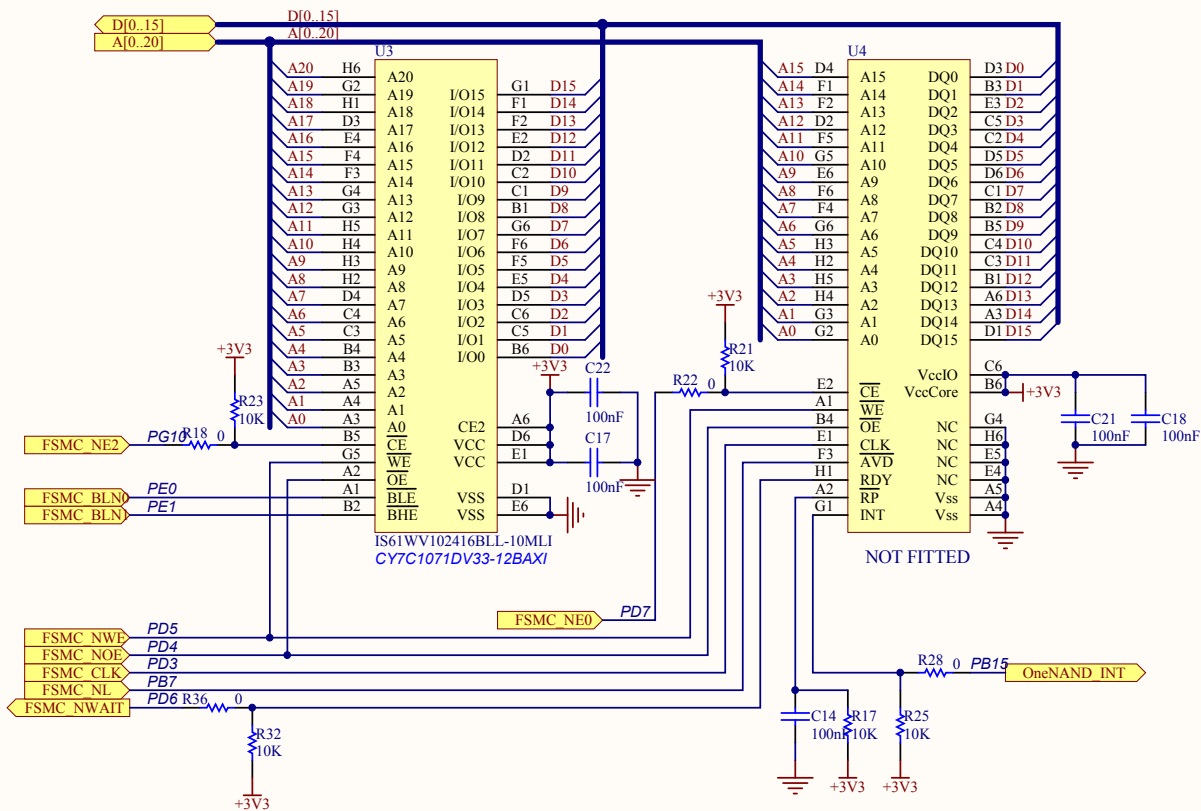
Number: MB901 Rev: B.1(PCB.SCH) Date: 2/4/2011 Sheet 13 of 13



STMicroelectronics

Title: **STM32100E-EVAL RS232,RS485 & IrDA**

Number: **MB901** | Rev: **B.1(PCB.SCH)** | Date: **2/4/2011** | Sheet **8** of **13**



STMicroelectronics

Title: **STM32100E-EVAL SRAM&OneNAND**

Number: **MB901** | Rev: **B.1(PCB.SCH)** | Date: **2/4/2011** | Sheet **3** of **13**

